



MULTI-PURPOSE BUCKETS

**TWO MODELS
FOR EVERY APPLICATION**

VERSATILE

Need to be able to grip, grab, pull and lift? Need to grade, doze, or dig and load? If so, your machine deserves a Rockland Multi-Purpose Bucket. These buckets are designed to perform and built to last. They deliver true versatility without changing attachments.

The MP is ideal for utility work and general contractors.

TWO MODELS FOR EVERY APPLICATION

It excavates, loads, and clears land—virtually whatever the job may require.

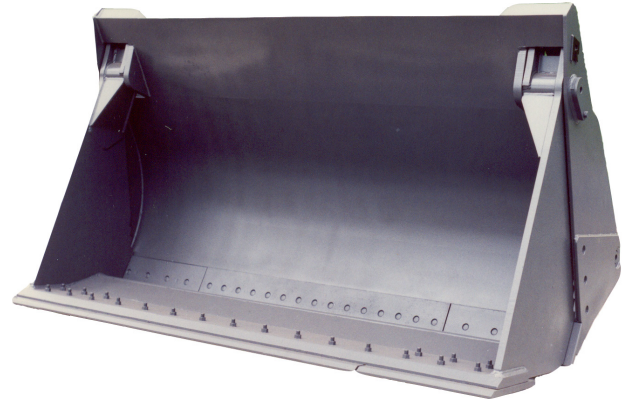
The MP-L was designed specifically for trash transfer stations. Its ability to crush, pick, sort, and doze really increases trash handling efficiency.

BUILT TO LAST

Both models are built to last in the Rockland tradition. Heavy-duty clams, oversize pivots, and hard alloy wear strips guarantee years of dependable service. Hydraulics are the heart of any multi-purpose bucket and Rockland hydraulics are first-class. High pressure cylinders with special heat-treated, hard chrome-plated rods deliver dependability—year after year. All moldboards are reinforced with box sections and equipped with bolt-on cutting edges and replaceable end bits. Clams can be equipped with bolt-on cutting edges or the teeth of your choice.

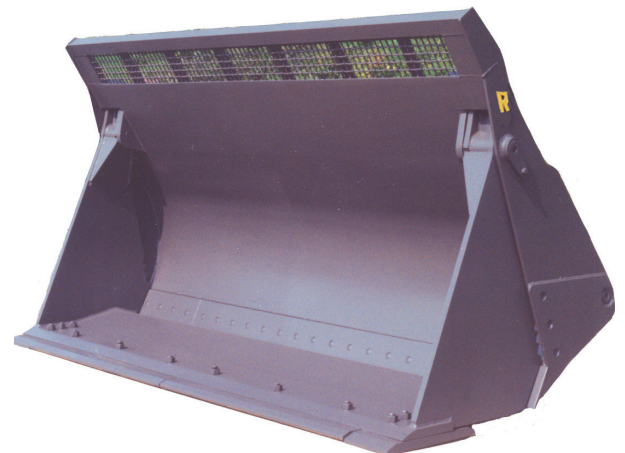
This all adds up to versatility, productivity, and dependability. If you are thinking Multi-Purpose buckets, specify Rockland. You will be glad you did!

MP MULTI-PURPOSE



Rockland MP Buckets are ideal for utility work and general contractors.

MP-L TRASH HANDLING



Transfer station operators appreciate the versatility of the Rockland MP-L because of the way it really speeds trash handling.

SPECIFICATIONS

MP MULTI-PURPOSE

WHEEL LOADER

MACHINE CLASS	5,10		10		10		10,20		20,30		20,30		30,40		40		40,50	
CAPACITY (Yd³)	1	.76	1.25	.96	1.375	1.05	1.5	1.15	1.75	1.34	2	1.53	2.25	1.72	2.5	1.91	2.75	2.1
OAW (")	88	2235	89	2261	95	2413	95	2413	96	2438	96	2438	100	2540	106	2692	106	2692
CEW (")	86.5	2197	87.5	2223	93.5	2375	93	2362	94	2388	94	2388	98	2489	104	2642	104	2642
WEIGHT (lbs.)	1735	787	2045	928	2145	973	2360	1071	3060	1388	3260	1479	3600	1633	3790	1719	4190	1901

MACHINE CLASS	50		50		50,60		60		60		60,70		70		70		80	
CAPACITY (Yd³)	3	2.29	3.25	2.48	3.5	2.68	3.75	2.87	4	3.06	4.25	3.25	4.5	3.44	4.75	3.63	5	3.82
OAW (")	116	2946	116	2946	122	3099	126	3200	132	3353	135	3429	144	3658	144	3658	144	3658
CEW (")	114	2896	114	2896	120	3048	124	3150	130	3302	133	3378	142	3607	142	3607	142	3607
WEIGHT (lbs.)	4500	2041	4900	2223	5380	2440	5480	2486	5680	2576	6110	2772	7275	3300	7775	3527	8575	3890

(mm/kg)

Specifications subject to change without notice.

CRAWLER LOADER

MACHINE CLASS	10		10,20		20		20,30		30		30,40		40		40,50		50	
CAPACITY (Yd³)	1	0.76	1.25	0.96	1.375	1.05	1.5	1.15	1.75	1.34	2	1.53	2.25	1.72	2.5	1.91	2.75	2.1
OAW (")	76	1930	80	2032	84	2134	84	2134	90	2286	92	2337	96	2438	100	2540	100	2540
CEW (")	74	1880	78	1981	82	2083	82	2083	88	2235	90	2286	94	2388	98	2489	98	2489
WEIGHT (lbs.)	1765	801	2395	1086	2595	1177	2795	1268	3360	1524	3615	1640	3855	1749	4300	1950	4655	2112

MACHINE CLASS	50,60		60		60	
CAPACITY (Yd³)	3	2.29	3.25	2.48	3.5	2.68
OAW (")	106	2692	106	2692	110	2794
CEW (")	104	2642	104	2642	108	2743
WEIGHT (lbs.)	5320	2413	5620	2549	6720	3048

(mm/kg)

Specifications subject to change without notice.

MP-L TRASH HANDLING

MP-L Trash Handling Bucket capacity should be determined by the weight of the material usually handled and the operating capacity of the loader. Often a bucket larger than the standard multi-purpose bucket can be used to maximize productivity.

MACHINE CLASS	10		20		20		30		30		40		40		50		50		60	
CAPACITY (Yd³)	2.75	2.1	2.75	2.1	4	3.06	4	3.06	5	3.82	5	3.82	6.75	5.16	6.75	5.16	7.75	5.93	7.75	5.93
OAW (")	96	2438	96	2438	106	2692	106	2692	106	2692	106	2692	120	3048	120	3048	130	3302	130	3302
CEW (")	94	2388	94	2388	104	2642	104	2642	104	2642	104	2642	118	2997	118	2997	128	3251	128	3251
WEIGHT (lbs.)	3295	1495	3760	1706	4090	1855	4490	2037	4900	2223	5465	2479	6000	2722	6380	2894	6755	3064	7530	3416

(mm/kg)

Specifications subject to change without notice.

INSTALLATION INFORMATION

Rockland MP buckets mount in place of the standard bucket using factory pins or specified coupler brackets. The loader must be equipped with a three-spool valve and boom arm piping. MP buckets come complete with jumper hoses to connect to standard boom arm piping.

WARRANTY

Rockland Multi-Purpose Buckets are guaranteed against failure due to defective design, workmanship or materials for a period of two years or 4000 hours.



Distributed by:

ROCKLAND MANUFACTURING CO.
 P O BOX 5
 BEDFORD, PA 15522
 800-458-3773
www.rocklandmfg.com