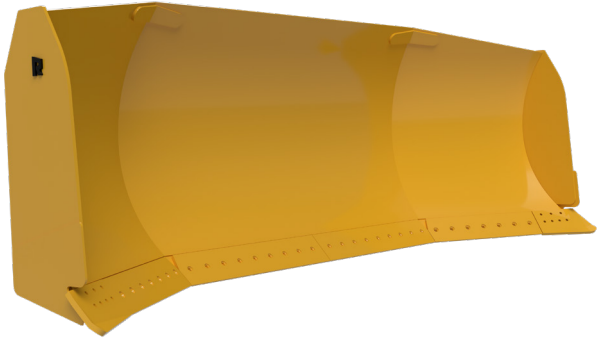




# COAL BLADES

MOVE MORE COAL ON EVERY PASS!



## THE RIGHT CHOICE FOR MOVING COAL

- Rockland coal blade profiles deliver live, rolling loads and are in service around the globe.
- Extended end plates contain load and eliminate side spillage.
- Heavy-duty, alloy steel box frame construction and abrasion resistance moldboard delivers years of dependable service.
- Available with many types of bolt-on cutting edges and end bits.
- Available with skid plates and other custom options based on application
- Backed by our no-nonsense 2 year, 4,000 hour warranty

### Specifications\*

Horsepower	Capacity (Yd <sup>3</sup> )	Width (")	Weight (Lbs.)
140-189	11.6 - 14	156 - 168	4,050
190-249	15 - 18	186 - 192	5,950
250-319	24.5 - 28	216	7,575
320-389	32 - 38	216 - 264	9,865
390-454	45	264	13,000
455-504	48 - 56	240 - 264	14,500
505-584	56 - 65	264	16,140
585-679	82	288	19,350
680-750	95	288	22,800
750 and above	100	288	24,000

Proudly Made in USA

\*Specifications subject to change without notice.

**WARRANTY** Rockland Coal Blades are guaranteed against failure due to defective design, materials, or workmanship for a period of two years or 4,000 hours.

[WWW.ROCKLANDMFG.COM](http://WWW.ROCKLANDMFG.COM) | [SALES@ROCKLANDMFG.COM](mailto:SALES@ROCKLANDMFG.COM) | 1-800-458-3773