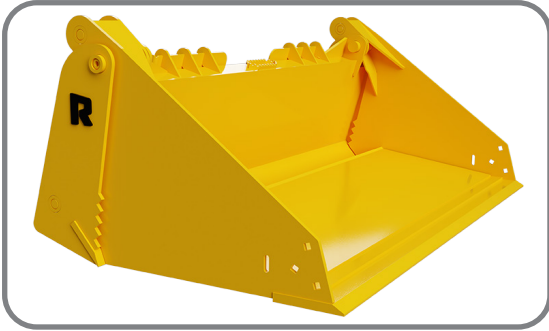




SKID STEER ATTACHMENTS

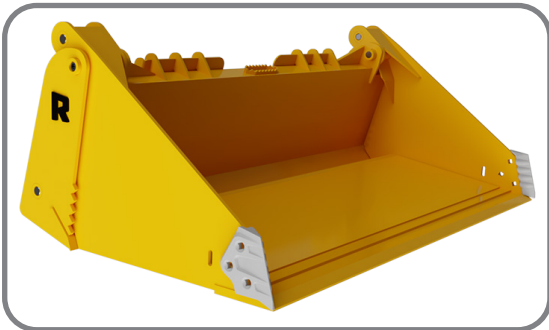
4-IN-1 BUCKETS



Heavy Duty

(Track machines up to 65HP | Wheeled machines up to 75HP)

- 2.5" bore cylinders
- Grease fittings at every pivot point
- Available with bolt-on sidecutters
- Available with weld-on teeth
- Includes hose kit with 1/2" flat-face couplers



Severe Duty

(Track machines over 65HP | Wheeled machines over 75HP)

- 3" bore cylinders
- Grease fittings at every pivot point
- Bolt-on sidecutters standard
- Available with weld-on teeth
- Includes hose kit with 1/2" flat-face couplers

SPECIFICATIONS

STYLE	HEAVY DUTY			SEVERE DUTY			
	0.42	0.44	0.48	0.63	0.68	0.71	0.73
CAPACITY (YD³)	0.42	0.44	0.48	0.63	0.68	0.71	0.73
WIDTH (IN.)	63	66	72	72	78	81	84
HEIGHT (IN.)	29	29	29	28	28	28	28
DEPTH (IN.)	26	26	26	35	35	35	35
BASE EDGE (IN.)	3/4 X 6	3/4 X 6	3/4 X 6	1 X 8	1 X 8	1 X 8	1 X 8
WEIGHT (LBS.)	785	810	840	1,150	1,255	1,295	1,271

Specifications subject to change without notice.

WARRANTY Rockland 4-in-1 Buckets are warranted to be free from defects in materials and workmanship for a period of 12 months from the initial sale, lease, or rental date.

SALES@ROCKLANDMFG.COM · 800.458.3773 · ROCKLANDMFG.COM